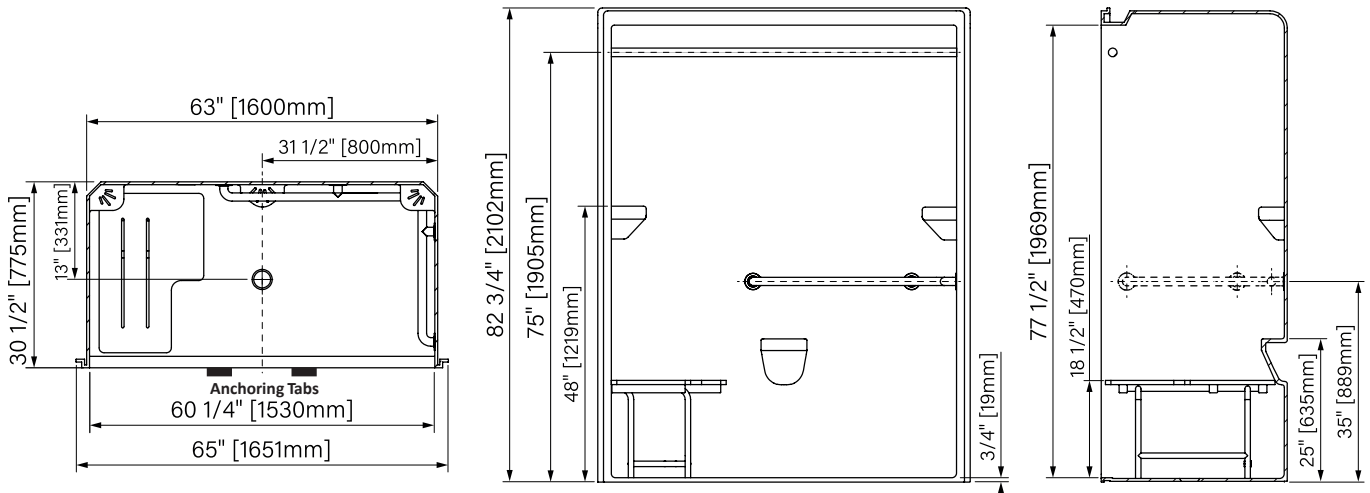


- SHAD6030AASLTW-¾"R: VALVE ON RIGHT, SEAT ON LEFT
- SHAD6030AASRT W-¾"L: VALVE ON LEFT, SEAT ON RIGHT



- ADA COMPLIANT
- ICC/ANSI 117.1/ANSI Z124.2
- CSA B45.5 94/B45-94
- ASTM E-84/ULC-S-102
- Meets requirements for Universal Plumbing Code administered by: IAPMO, HUD, BOCA, and NAHB.
- Available as ADA Compliant for Commonwealth of Massachusetts.
- NOTE: Backing & bolts for fold-up seat may add up to ¾" to overall dimensions.

Note: Dimensions may vary within normal manufacturing tolerances +/- ¼".

ARCHITECTURAL SPECIFICATION:

Shower Enclosure shall be an ADA compliant Acryline®, model number SHAD6030-FUS-¾" molded from a single sheet of acrylic resulting in no seams or joints. Unit shall have a ¾" or less threshold lip with anchoring tabs and encapsulated steel reinforcement for level floor installation. Enclosure shall be certified ANSI Z124.2 with a backside flame spread of less than 30.

* ID: 60¾" x 30" x 80¾" (1530mm x 762mm x 2038mm) * OD: 65" x 30½" x 82¾" (1651mm x 775mm x 2102mm)
* Approximate weight 226 lbs.

- * Enclosure equipped standard with *HD white phenolic fold-up seat L/H OOP180 * 3 integral molded soap trays
- * Enclosure equipped with factory installed S.S. peened grab bars.
- * 1 Half wrapped: 35" x 25¼" x 1¼" OOP216
- * Grab bars to be installed with steel backing and shall be sealed to insure water tight integrity.
- * Unit shall have 5/8" receiving flange. * Self-caulking brass drain with S.S. strainer OOP304
- * 1" S.S. curtain rod OOP222 (factory installed) * HD white phenolic fold-up seat R/H OOP181

State agencies and local authorities sometimes require specific code compliance regulations. Acryline®. ADA compliant units are based on the guidelines of the American with Disabilities Act. 1991. Any improper installation/field modifications could take the enclosure out of compliance. Acryline® accepts no responsibility for final code compliance.

OPTIONS:

- HD White padded FUS seat L/H : OOP176 (Mass Code Requirement)
- HD White padded FUS seat R/H : OOP177 (Mass Code Requirement)
- FUS conversion package : OOP169 (less seat)
- Anti-Bacterial shower curtain/hooks : OOP227
- Collapsible Water Retention Strip : OOP310-60
- Removable threshold : OOP308-60
- LED Dome light : OOP228
- Pre-Drilled hole to fit OOP228 dome light : OOP320
- Forward Flange adapter (consult factory) : OOP408

JOB:

Plumber/Contractor:

Architect:

Engineer:

Modifications:

Received and/or Approved by: